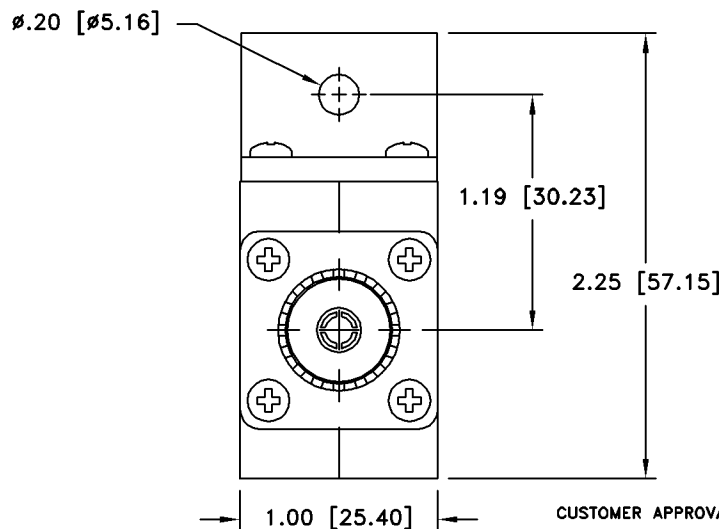
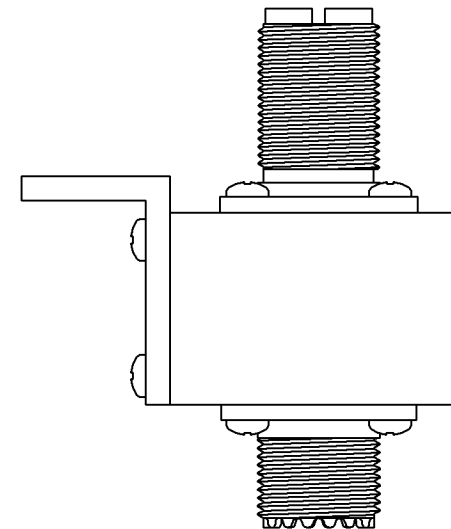
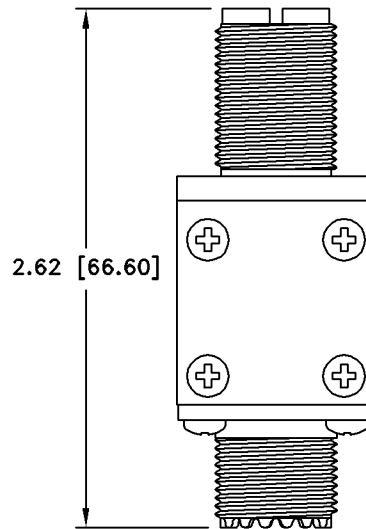
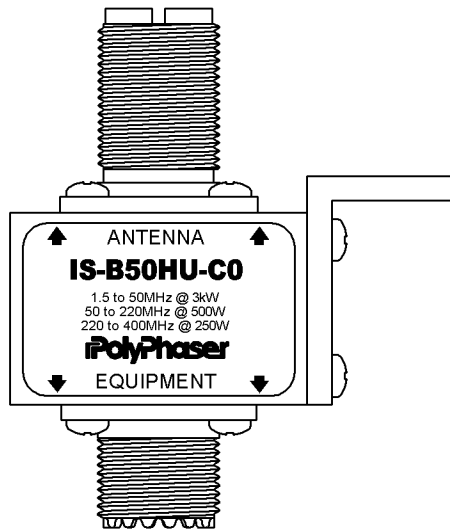


ALL DESIGN, OPERATIVE AND PROCESS DATA PERTAINING TO THE ARTICLE SHOWN ON THIS SHEET IS THE PROPERTY OF POLYPHASER CORPORATION. THE INFORMATION IS NOT TO BE COPIED, REPRODUCED, REVEALED TO OR APPROPRIATED BY OTHERS WITHOUT THE EXPRESS WRITTEN CONSENT OF POLYPHASER CORPORATION.

These commodities or technology are exported from the U.S. in accordance with the Export Administration Regulations. Diversion contrary to U.S. law prohibited.

REVISIONS

REV LTR	DATE	ENG	MKTG	Q.A.
B	01/17/01 ^{SH}	KCB	PH	RM
C	05/02/01 ^{IB}	RCD	PH	RM
D	03/03/08 ^{SH}	RD	SD	RM



MAXIMUM CHARACTERISTICS
APPLICATION: BULKHEAD MOUNT
FREQUENCY RANGE: 1.5MHz TO 400MHz
SURGE: 50kA IEC 61000-4-5 8/20μs WAVEFORM 500J
TURN-ON: 1200Vdc ±20% 7ns FOR 2kV/ns
VSWR: ≤1.2:1 @ 1.5MHz TO 400MHz
INSERTION LOSS: <0.1dB OVER FREQUENCY RANGE
MAX POWER: HF 3kW, VHF 500W, UHF 250W
THROUGHPUT ENERGY: <20mJ TYPICAL
OPERATING TEMPERATURE: -45°C TO +50°C
STORAGE TEMPERATURE: -45°C TO +85°C
RELATIVE HUMIDITY: 90% AT 40°C
VIBRATION: 1G AT 5Hz TO 100Hz

CUSTOMER APPROVAL: _____ DATE: _____
ALL DIMENSIONS SHOWN ABOVE ARE FOR REFERENCE ONLY.

DRAFTER C. GASPARINI	DATE 06/18/98
MECH ENGINEER R. DUNNING	DATE 06/29/98
ELEC ENGINEER K. BARTEL	DATE 06/24/98
MARKETING - - - -	DATE - - - -
QUALITY DEPT R. MATHEUS	DATE 06/24/98

PolyPhaser

P.O. BOX 9000 MINDEN, NV 89423 TEL: 775-782-2511 FAX: 775-782-4476
DWG NO/PART NO/DESCRIPTION

IS-B50HU-C0
CUSTOMER PRINT

CAGE CODE 61114	FILE NAME -C1	SCALE 1/1	SHEET 1 OF 1
--------------------	------------------	--------------	-----------------